

artemis


at@leza
developers

54 Vasileos Constantinou Str.
Erimoudes Court, 1st Floor
3075 Limassol, Cyprus
t: +357 7000 8800
eM: info@ataleza.com
www.ataleza.com

artemis residences

Location

"Artemis Residences" is a luxurious project located in a peaceful area of Parekklesia village, 15 Km east of Limassol and just a few minutes away from a blue flag sandy beach and the famous St Rafael Marina.

Design

The project was designed to create a harmonious balance between comfort and style. An excellent suggestion from our Designers to those of you that dream having a modern home with extraordinary style and functionality.

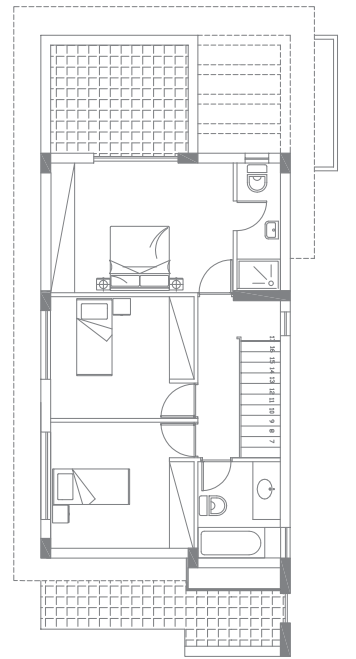
Quality

The project has been build to the highest standard of quality and specifications through out, in order to maintain our company's policy of creating exceptional developments while fulfilling the dreams of our most demanding clients.

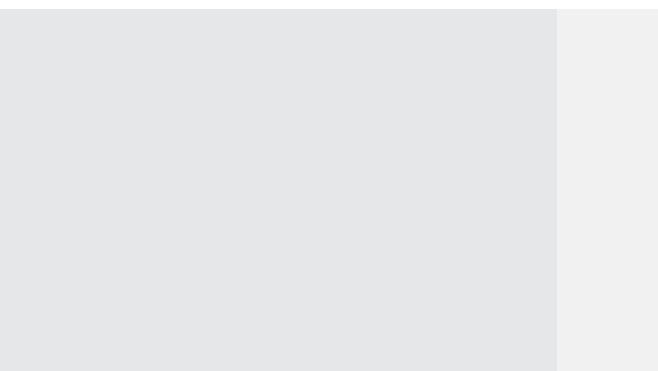
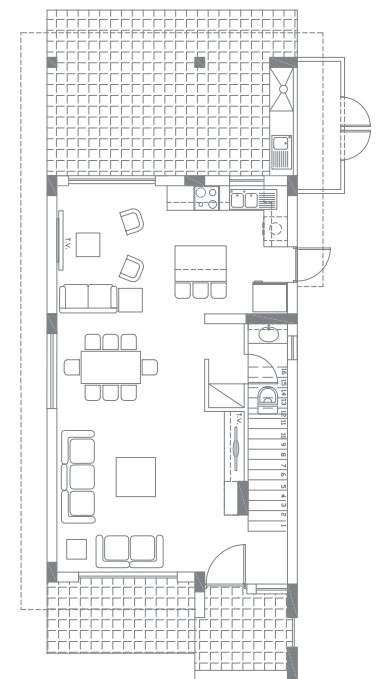
"We offer you the lifestyle you always wanted."



first floor



ground floor



Artemis	A	B
Bedrooms	3	3
Covered Area	135 m ²	127 m ²
Covered Verandas	24 m ²	24 m ²
Uncovered Verandas	17 m ²	15 m ²
Pergola	15 m ²	15 m ²
Plot Area	431 m ²	382 m ²

